

Installing & Tools

Unroll all panels and lay them flat on the floor. You may notice creases and/or bubbles as you unroll the panels. Don't worry, this is normal. The creases will disappear once you remove the backing and apply the mural to the wall.

The panels should be hung edge to edge. Before hanging, please make sure that all panels are included and none are damaged or defective. During the manufacturing process of your wall mural, we have added a bleed of 50mm to your sizes to accommodate any imperfect angled walls.

Self adhesive wallpaper is easy to fit and all you need in your toolkit is: spirit level, pencil, knife, trim guide, ruler, smoother.

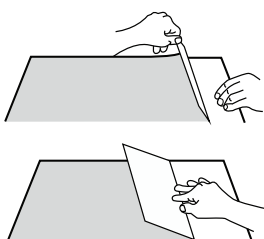
Prepare the wall

The wall surface should be clean, dry, structurally sound and free of mildew, grease, or other stains, and free of irregularities in order to achieve the best finish.

For best results, apply to a wall surface that has been painted with one coat of builder's primer and one coat of latex paint, this is typical of new construction, a wall surface that has been painted with a single coat of primer or a coat of satin or gloss paint is acceptable. You should also prime the surface if it has a bright colour that could show through the wall mural.

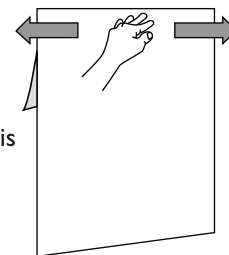
1

Apply the mural from left to right. Take the first panel, peel back the backing sheet approximately 20cm and sharply crease the liner, DON'T peel all the backing off.



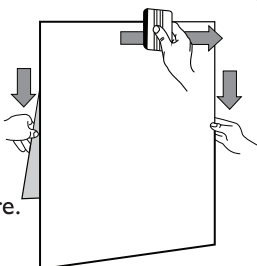
2

Position your first panel on the wall. Make sure your first drop is in a perfectly vertical position. Align the panel on the wall and use finger pressure to tack it in place.



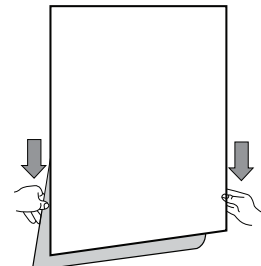
3

Take the squeegee supplied and squeegee from the centre outward and left to right. Use gentle strokes and even pressure.



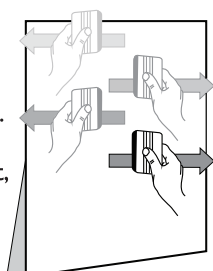
4

Reach underneath the panel and gradually pull another piece of the backing paper away. Use the same method to apply, until you reach the bottom of the panel.



5

Repeat with the remaining panels. Remember the panels are applied edge to edge. To re-apply any part, simply peel away from the wall and re-apply, avoid stretching and pulling.



6

Once all the panels have been hung, trim off any excess paper using a trim guide and a sharp knife.

